



1. Kilmaclenine (Co. 1). The chamber, from South.



2. Manning (Co. 2). The gallery, from East.



3. Labbacallee (Co. 3), from North.



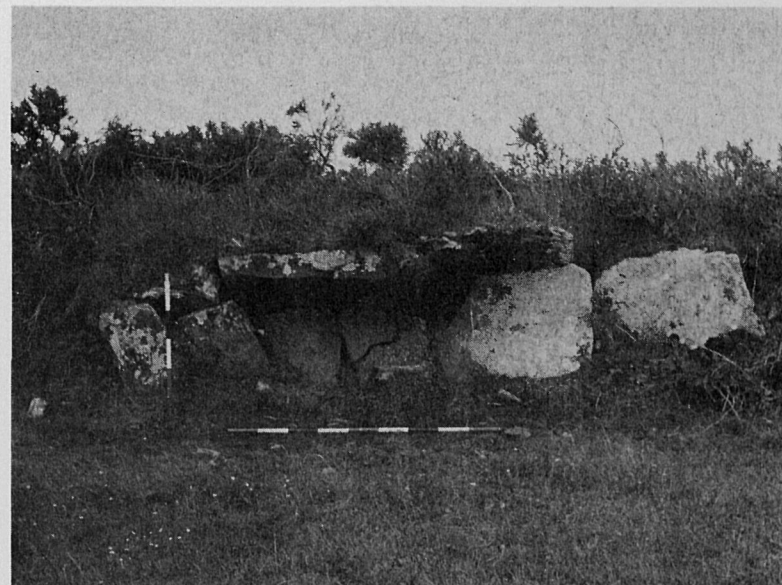
4. Labbacallee (Co. 3), from West.







1. Crinnaloo North (Co. 4), from South-East.



2. Beennamweel East (Co. 5), from North.



3. Island (Co. 6), from West.



4. Glantane East (Co. 7), from West.







1. Caherdowney (Co. 8), from North.



2. Knocknagoun (Co. 9), from South.



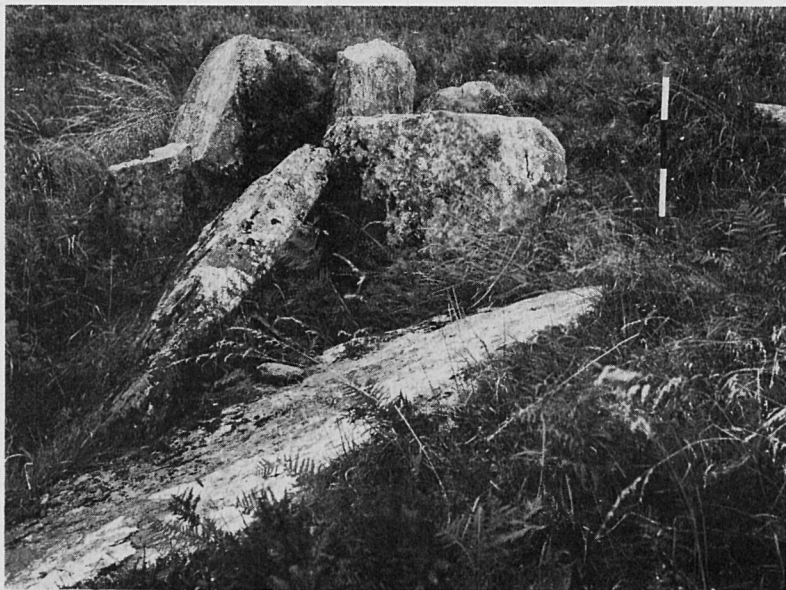
3. Coolicka (Co. 10), from South.



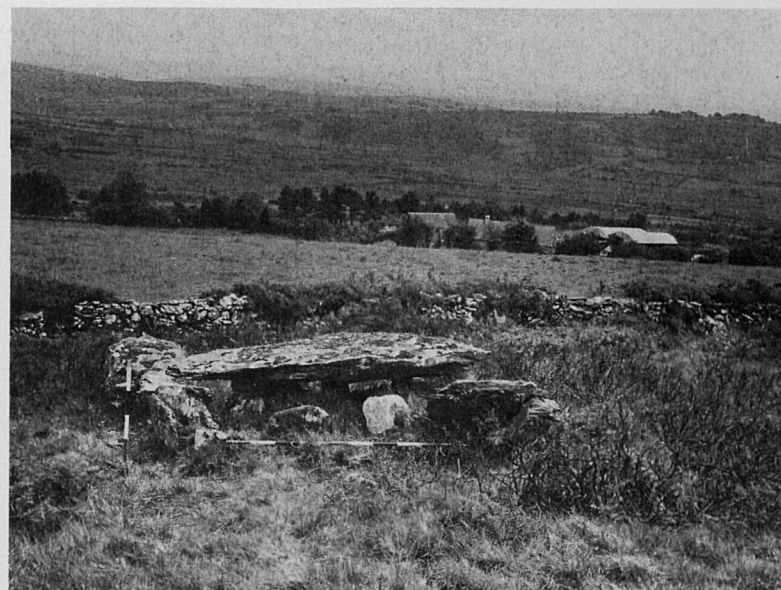
4. Ryefield East (Co. 11), from South.



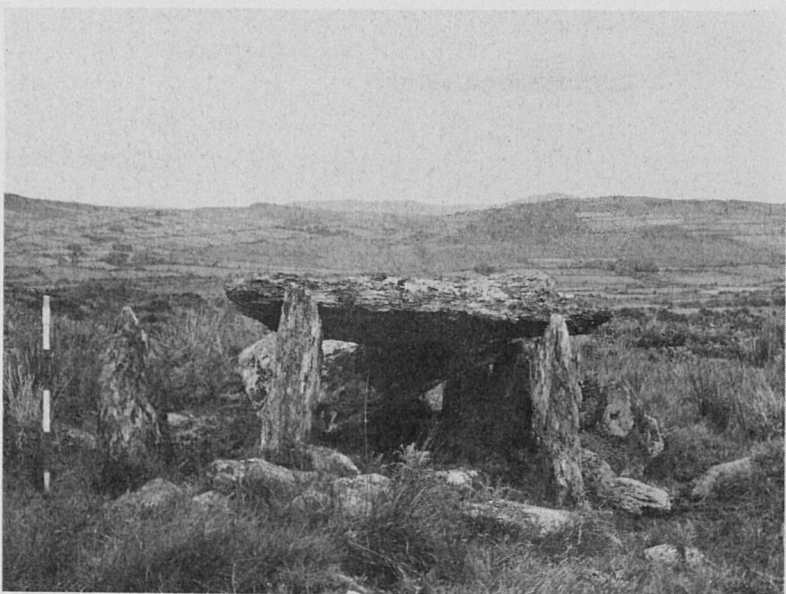




1. Rathaneague (Co. 12), from North.



2. Lackaduv (Co. 14), from North.



3. Carrigonirtane (Co. 13), from West.



4. Carrigonirtane (Co. 13), from South.







1. Scrahanard (Co. 15), from South.



2. Caherbirrane (Co. 16), from West.



3. Knocknagappul (Co. 17), from West.



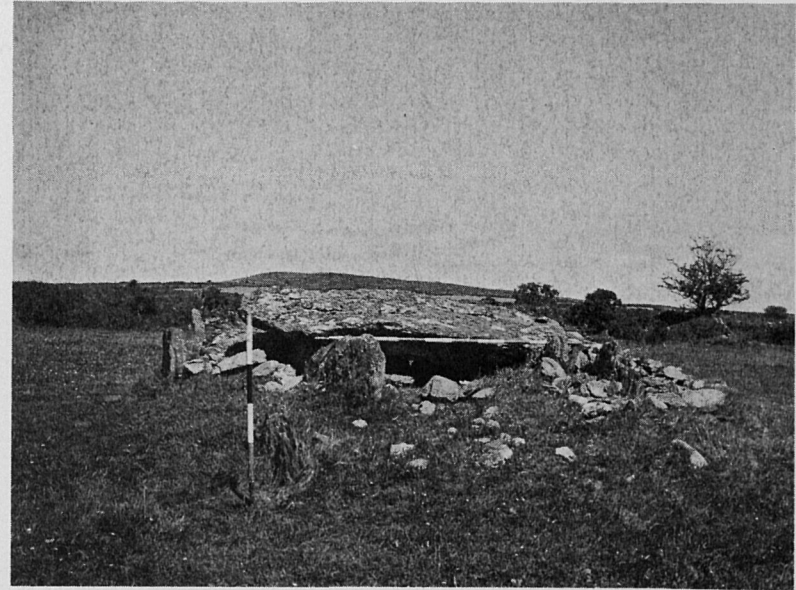
4. Knocknagappul (Co. 17), from South.



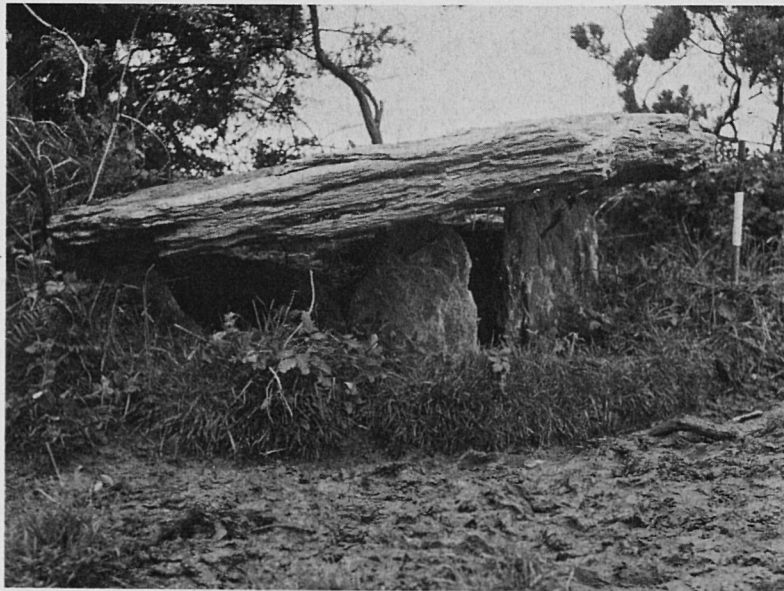




1. Caherbaroul (Co. 18), from South.



2. Kilberrihert (Co. 19), from West.



3. Knockglass (Co. 20), from South.



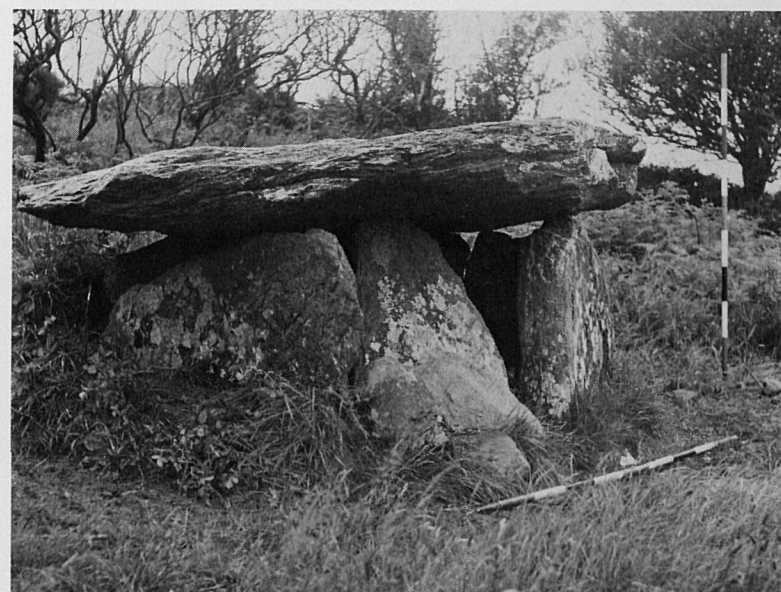
4. Gortanacra (Co. 21), from West.







1. The site of the destroyed tomb at Dromduff (Co. 22), from West.



2. Bealick (Co. 23), from East.



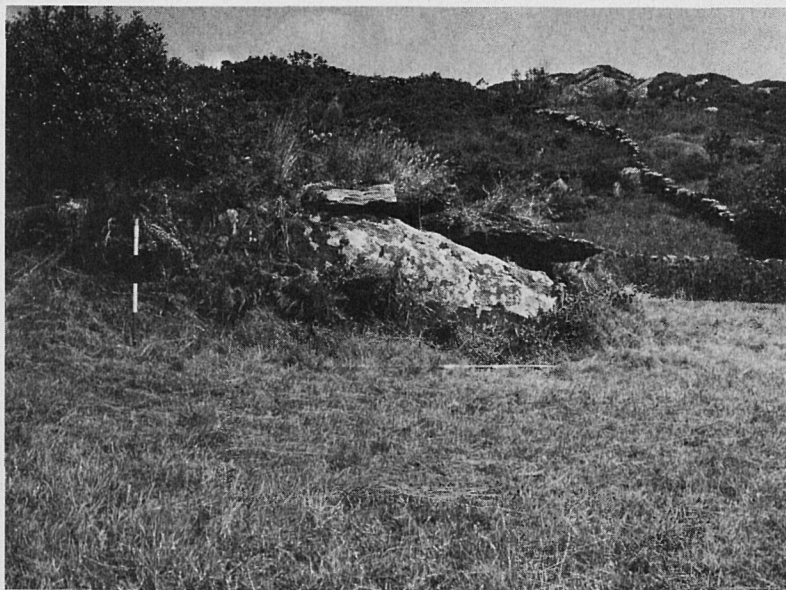
3. Keamcorravooly (Co. 24), from West.



4. Keamcorravooly (Co. 24), from North.







1. Gortafludig (Co. 25), from South.



2. Keamcorravooly (Co. 26), from North-East.



3. Derryvacorneen (Co. 27), from South.



4. Derrygortnacloghy (Co. 28), from North.







1. Inchineave (Co. 29), from East.



2. Knockane (Co. 30 and 31), from West.



3. Knockane (Co. 30), from South-West.



4. Knockane (Co. 31), from North.







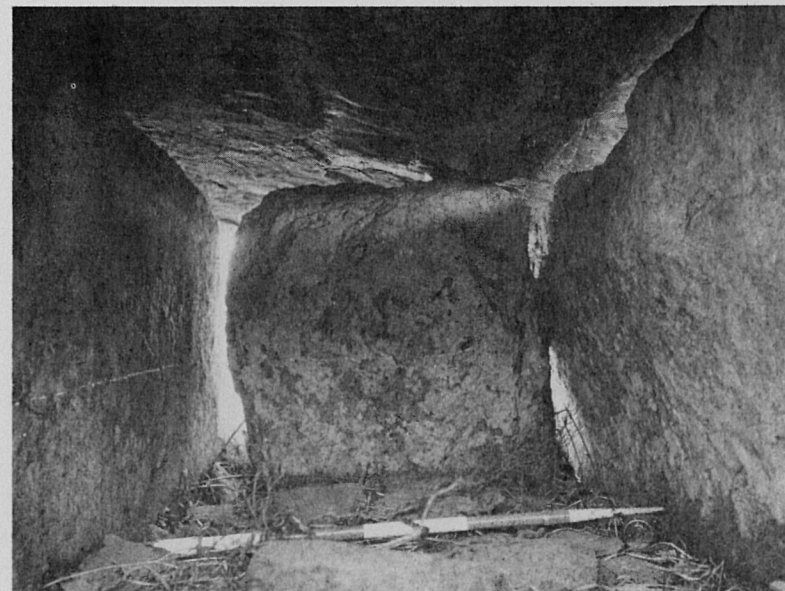
1. Laghtneill (Co. 32), from South-East.



2. Cornery (Co. 34), from South.



3. Derryriordain South (Co. 33), from East.



4. Derryriordain South (Co. 33), Western face of backstone.







1. Carrignamuck (Co. 35), The mound, from South.



2. Cloghboola (Co. 36), from South-West.



3. Cornery (Co. 37), from West.



4. Clogher (Co. 39), from East.





1. Lackabaun (Co. 38), from North.



2. Lackabaun (Co. 38), from South.



3. Cloghboola (Co. 41), from South-East.



4. Inchincurka (Co. 42), from South.







1. Keenrath (Co. 43), from West.



2. Clashbredane (Co. 44), from South.



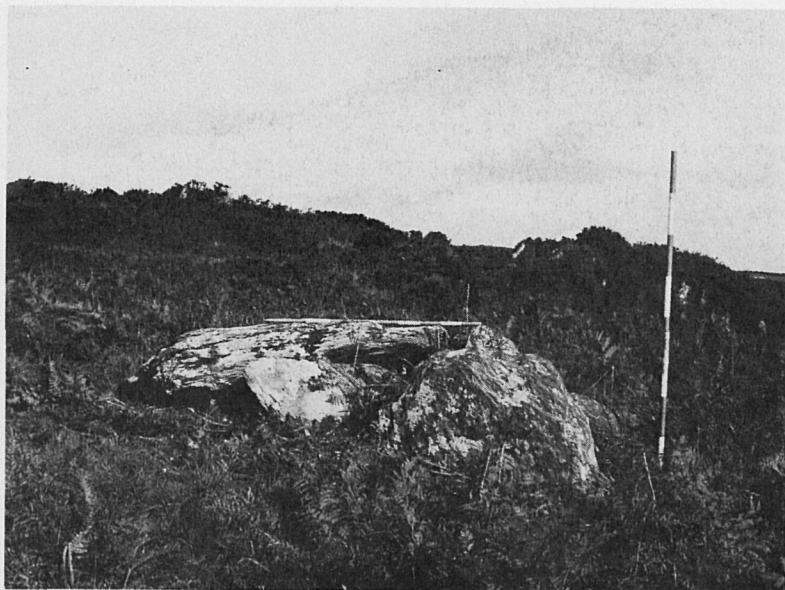
3. Slieveowen (Co. 45), from East.



4. Cappeen East (Co. 46), from West.







1. Belrose Lower (Co. 47), from South.



2. Kilcatherine (Co. 48), from West.



3. Bofickil (Co. 49), from East.



4. Ballynahown (Co. 50), from North-East.







1. Teernahillane (Co. 51), from South.



2. Kilmackowen (Co. 52), from North-West.



3. Killough East (Co. 53), from South.



4. Ardaraigh West (Co. 54), from West.







1. Ahaglaslin (Co. 55), from East.



2. Ballydivlin (Co. 56), from North.



3. Ballyvoge Beg (Co. 57), from West.



4. Tooreen (Co. 58) from North.

